



**Calderdale Geoscience (CGL)**, a UK-based geoscience consultancy established in 2004, wishes to offer the petrophysical analysis of well logs as a service to the geoscience community. This service can provide an interpretation of fundamental reservoir properties, acquired from the borehole, including; hydrocarbon saturation, porosity, lithology, net/gross, and net pay. These can be interpreted for single or multiple wells.

## Petrophysical Interpretation Services

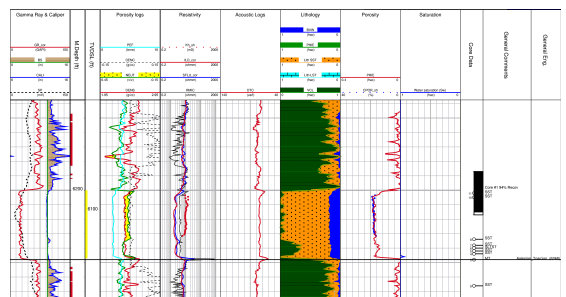
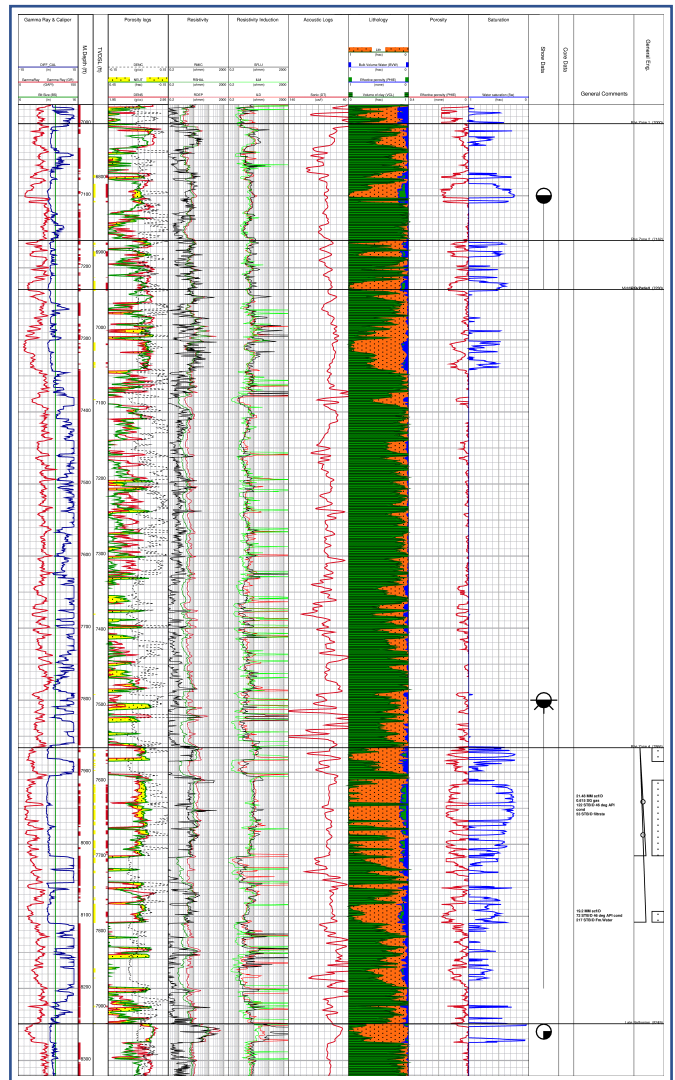
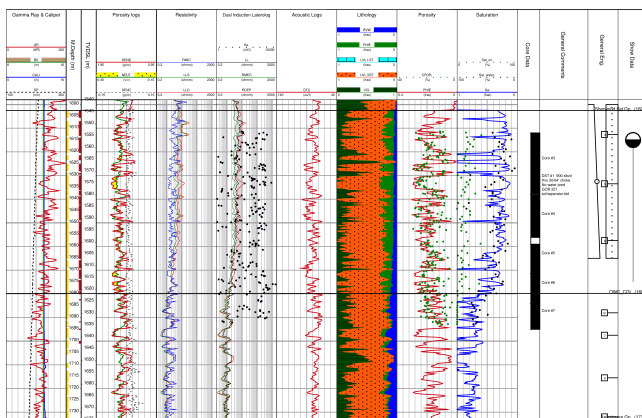
CGL's petrophysical consultancy service integrates: log, core, pressure and geologic data and provides multiple or single well deterministic or probabilistic interpretations. CGL also offers: saturation height analysis; the statistical treatment of log data for petrofacies classification and identification, integration of facies classification and multi-well correlation. CGL supports Terrastation™ and IP™ technologies.

## Petrophysical Bureau Services

CGL's bureau services include: curve depth matching; environmental corrections; curve editing and log compositing; TVD calculation; calculation of geophysical logs, rock physics and elastic properties.

## Deliverables

Reports and CPI's<sup>1,2</sup> are delivered in '.pdf' format with log curves available as LAS files and averages and parameters as '.xls' files.



For more information and pricing, please contact Dave Melnyk  
[davem@calderdalegeoscience.co.uk](mailto:davem@calderdalegeoscience.co.uk)  
 or Roman Bobolecki  
[romanb@calderdalegeoscience.co.uk](mailto:romanb@calderdalegeoscience.co.uk)  
 Or visit:  
[www.calderdalegeoscience.co.uk](http://www.calderdalegeoscience.co.uk)

<sup>1</sup>Example of CPI <sup>2</sup>List of Currently Available CPIs